






POWEREDGE TOWER SERVERS

Dell EMC PowerEdge tower servers offer powerful performance, versatility and quiet operations to users ranging from small and home offices to data centers. Tower servers come in a wide range of sizes, from mini-towers to rack-capable platforms. Adapt to changing workloads with flexible expansion options. And with intelligent automation, you can empower your team, freeing them from routine maintenance. Build a worry-free infrastructure with the PowerEdge tower servers portfolio.

	T640 	T440 	T330 	T130 	T30 
Specifications	Powerful tower and rack-capable server with huge storage capacity to address diverse workloads.	Balance of performance and capacity for office workloads in a tower or rack.	Powerful and expandable 1-socket rack-capable tower server for SMB and ROBO.	Powerful and reliable 1-socket tower server for SOHO and SMB.	Excellent first server for small office or home office (SOHO).
Processor	Up to two Intel® Xeon® Scalable processors	Up to two Intel Xeon Scalable processors	Up to one Intel Xeon E3-1200 v6 or Intel Pentium or Intel Core i3® or Intel Celeron® processor	Up to one Intel Xeon E3-1200 v6 or Intel Pentium or Intel Core i3 or Intel Celeron processor	Up to one Intel Xeon E3-1225 v5 or Intel Pentium G4400 processor
Memory	24 DDR4 DIMM slots, 3TB max, ¹ speeds up to 2666MT/s	16 DDR4 RDIMM slots, 512GB max, speeds up to 2666MT/s	Up to 4 DDR4 DIMM slots, 64GB max, speeds up to 2400MT/s	Up to 4 DDR4 DIMM slots, 64GB max, speeds up to 2400MT/s	Up to 4 DDR4 DIMM slots, 64GB max, speeds up to 2133MT/s
Disk	Up to 32 x 2.5" drives or 18 x 3.5" drives	Up to 16 x 2.5" or 8 x 3.5" drives	8 x 3.5" drives (also supports 2.5" drives in 3.5" hybrid drive carrier)	Up to 4 x 3.5" drives	Up to 6 drives (4 x 3.5" plus 2 x 2.5" with expansion kit)
NVMe	Up to 8 NVMe drives	Not Available	Not Available	Not Available	Not Available
PCIe slots	Up to 8 x Gen3 slots	Up to 5 x Gen3	Up to 4 x Gen3 slots	Up to 4 x Gen3 slots	Up to 3 x Gen3 slots
GPU support	Up to 4 x 300W or 8 x 150W	Up to 1x 150W	Not Available	Not Available	Not Available
Power supplies	Single or dual 495W, 750W, 1100W, 1600W, 2000W or 2400W hot plug PSU	Single or dual 495W, 750W, 1100W hot plug PSU or 450W cabled PSU	Single 350W cabled PSU, single 495W Hot-Plug PSU or dual 495W Hot-Plug Redundant PSUs	Single 290W cabled PSU	Single 290W cabled PSU
Dimensions	Max depth 750mm, 5U rack	Max depth 594.82mm, 5U rack	Max depth 594.82mm, 5U rack	Max depth 435mm, mini-tower	Max depth 435mm, mini-tower
Security	TPM 1.2/2.0 optional Cryptographically signed firmware Chassis Intrusion Alert Hardware Root of Trust Secure Boot System Lockdown Secure Erase		TPM 1.2/2.0 optional Cryptographically signed firmware Chassis Intrusion Alert Secure Boot		TPM 1.2/2.0 optional

¹ The 128GB DIMM slots will be available post-release for T640.

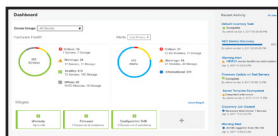
“Between the motherboards, solidstate storage, GPUs, and Intel CPUs, the Dell PowerEdge T630s provide the fastest available performance... When you add the network, users are realizing up to 200 percent improvements in application response times.”

- Huf Sheldon, Director of Research Systems for the Program of Computer Graphics, Cornell University

Dell EMC Solutions

When you buy a Dell EMC server, you get more than just hardware. You get access to IT solutions end-to-end. Dell and EMC bring together industry-leading expertise into a common platform to help you transform your data center. Dell EMC can deliver PowerEdge technology at any level of integration – from a best-in-breed platform, to a pre-integrated fully turnkey hybrid cloud implementation or any step in-between. Combining the PowerEdge server infrastructure with Dell Services and Financial Solutions allows you to modernize your data center faster, more affordably and with less risk.

OpenManage Systems Management



Spend less time on routine maintenance and stay focused on your business-critical priorities, thanks to the intelligent automation capabilities of PowerEdge servers. OpenManage™ System Management means your servers can take care of themselves, with zero touch configuration, proactive support notification and easy system erase when it is time for systems to be retired or redeployed. With iDRAC's agent-free server management, you can utilize consistent methods to manage servers regardless of the installed OS and workloads. You can remotely manage PowerEdge servers via scripts with the new, Redfish-compliant iDRAC Restful API, Dell and third-party consoles, or legacy APIs.

Dell EMC Services



To fully implement a modern infrastructure, organizations require reliable, comprehensive IT services to drive IT transformations, accelerate adoption of new technologies and maximize productivity.

Architect: Get started with our IT Transformation Workshop to accelerate your transformation to becoming an agile business partner and broker of services to the business.

Implement: The ProDeploy Enterprise Suite helps you get more out of your new technology starting day one. Trust Dell EMC experts to lead deployments from basic hardware installations through planning, configuration and complex integrations.

Manage: The ProSupport Enterprise Suite ensures 24x7 access to elite ProSupport engineers along with automated, proactive and predictive tools enabled by SupportAssist. Our personalized service and preventative measures help you get ahead of problems before they happen.

Dell EMC Data Center Infrastructure

Dell EMC Data Center Infrastructure (DCI) simplifies and manages critical infrastructure in and around the data center serving the needs of your business. A complete portfolio of racks, power and cooling solutions lets you scale as your data center needs grow.



Learn more about
Dell EMC Server
Solutions



Contact a Dell EMC Expert



View more resources



*Not all features are available on all platforms. For a comprehensive list, visit dell.com/servers

© 2017 Dell Inc. or its subsidiaries. All Rights Reserved. Dell, EMC and other trademarks are trademarks of Dell Inc. or its subsidiaries. Other trademarks may be trademarks of their respective owners.

